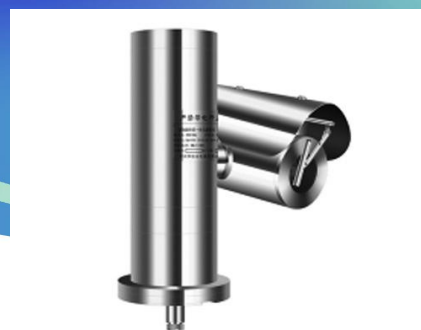


ZAT600

Explosion Proof PTZ Camera



ZUOAN

Certificate	
Certificate Mark	Exd IIC T6 Gb/Ext D A21 IP65 T80°C
Certificate No	CNEx14.3487X
Standards	Q/320412 ZAF007-2014
Mechanical	
Housing	Stainless steel 304 or 316L
IP	IP65
Cable thread hole	1pcs G3/4 or NPT3/4
Wiper	yes
Electrical	
Voltage	AC85V~AC265V or DC24V or AC24V
Power	35W /55W (with thermostat)
Ambient	
Ambient temperature	-25 to +60°C
Air pressure	80Kpa to 106Kpa
Relative Humidity	≦95% (no condensation)
Communication	
Communication	support analog video output
485 Communication	Support Pelco-D, Pelco-P
Communicate Rate	2400 to 19200bps
Pan & Tilt	
Horizontal	360°
Horizontal speed	0.1-45°/s
Vertical	-90 to +90°
Camera	
Image Sensor	1/3" interline-transfer CCD
Effective pixel	PAL 976*582 NTSC 976*494
Min. Illumination	Color 0.04Lux B/W: 0.004Lux
Shutter Time	1/50(1/60) sec~ 1/10,000 sec
Horizontal resolution	700TVL (color), 720TVL (B&W)
S/N ratio	>50dB (AGC off)
Lens	
Focal Length	4-92mm, 23X/or 36X optical
Aperture Range	F1.5-F3.6

Angle of View	49-2.2 degree(Wide-Tele)
Min. Working Distance	10mm-1500mm(Wide-Tele)
Zoom Speed	Approx. 3s(Optical, Wide-Tele)
Control	
Camera address	on/off (0-254)
Focus Mode	Auto/Manual/One touch
Gain	off/ lower/ higher
Slow shutter	X256 MAX
White Balance	Auto /Indoor/Outdoor/Manual/auto tracking
Video	3D DNR, mirror, brightness, Contrast, Sharpness adjustab
Digital zoom	X16
Zoom display	on/off
ZCF control mode	mode 1, mode 2
RS485	protocol, baud rate, address
General	
Cable	integrated cable
Size	310*305*381mm
Weight	17kg
Mounted	wall, pole
Wall bracket	ZAZ600B
Dimension	

